

E-mail
Instagram

lorenzoph.ferrari@gmail.com



Poltroncina Palermo
Armchair Palermo

22nd Aug 2025

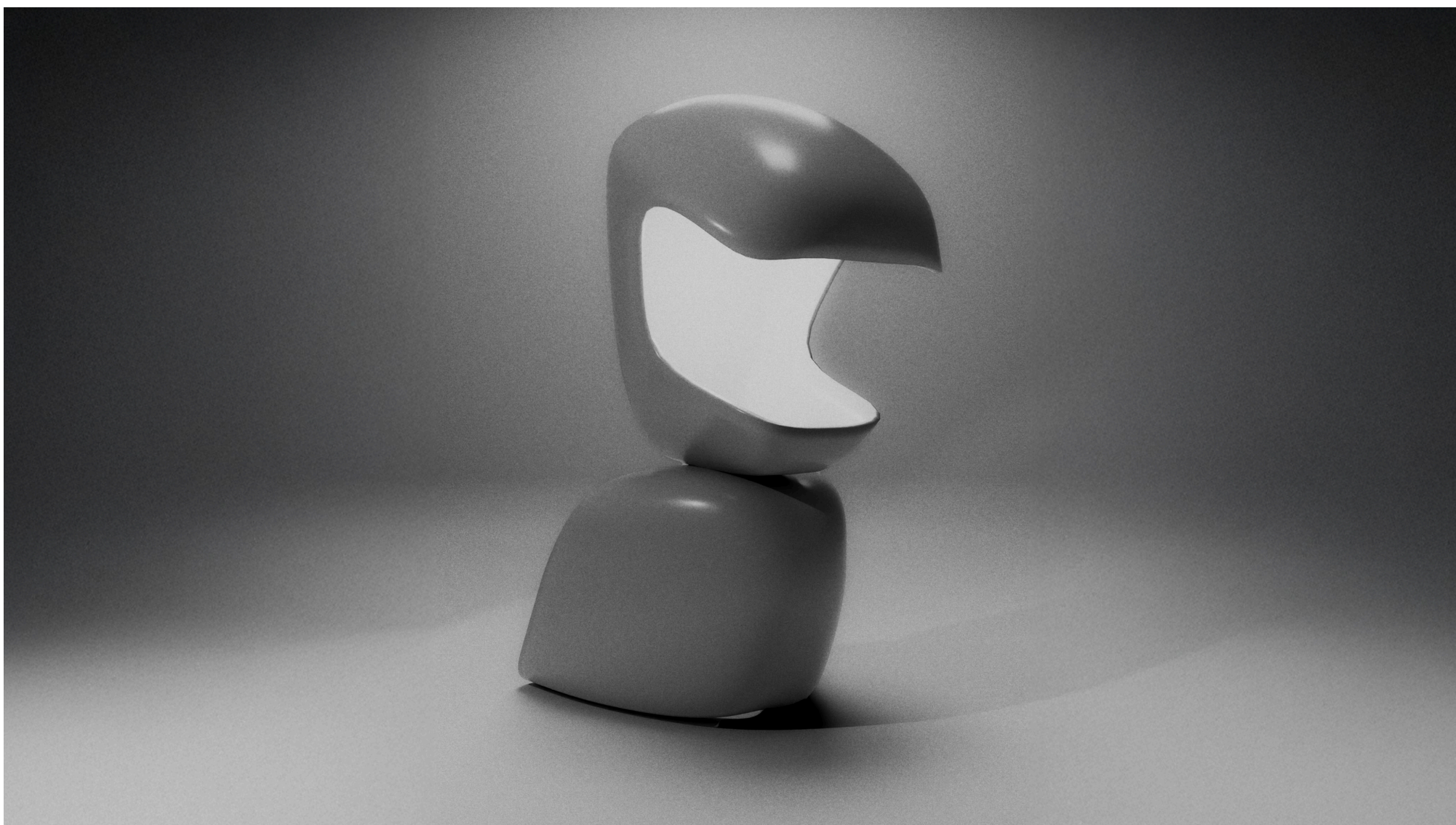


The small armchair "Palermo" draws inspiration from the design philosophy of Franco Albini, a master in expressing "substance within form". It embodies a delicate balance between rational rigor and poetic lightness.

Crafted from ash or birch wood, selected for their strength, luminosity, and tactile naturalness, the chair offers a contemporary reinterpretation of the seating archetype. Its structure is composed of a slender wooden frame in which the seat and backrest emerge as suspended geometric planes, seemingly weightless.

The joints, designed with the same section as the supporting frame, minimize the use of material while creating a sense of continuity and constructive coherence. This detail becomes a stylistic signature: not merely a technical solution, but an element that narrates the logic of the project and enhances its formal purity.

This armchair is not just a functional object but an act of synthesis: an invitation to sit within an essential form, where visual lightness and economy of means become aesthetic and cultural values.



Lampada da tavolo - Cásch
Table lamp - Cásch

14th may 2025



Casch is a portable lamp that embodies both functionality and sculptural design, merging technology with minimal aesthetics.

Its name, derived from the Brescian dialect for "helmet," reflects its protective, enveloping shape, which creates a sense of intimacy and focus when illuminated. Compact and lightweight, Casch is designed to be carried easily, making it an adaptable light source for both personal and shared spaces. The body is 3D printed, showcasing the potential of modern fabrication methods in creating sleek, organic forms with precision. Inside, energy-efficient LED lights provide a soft yet powerful glow, perfect for reading, working, or ambient lighting.

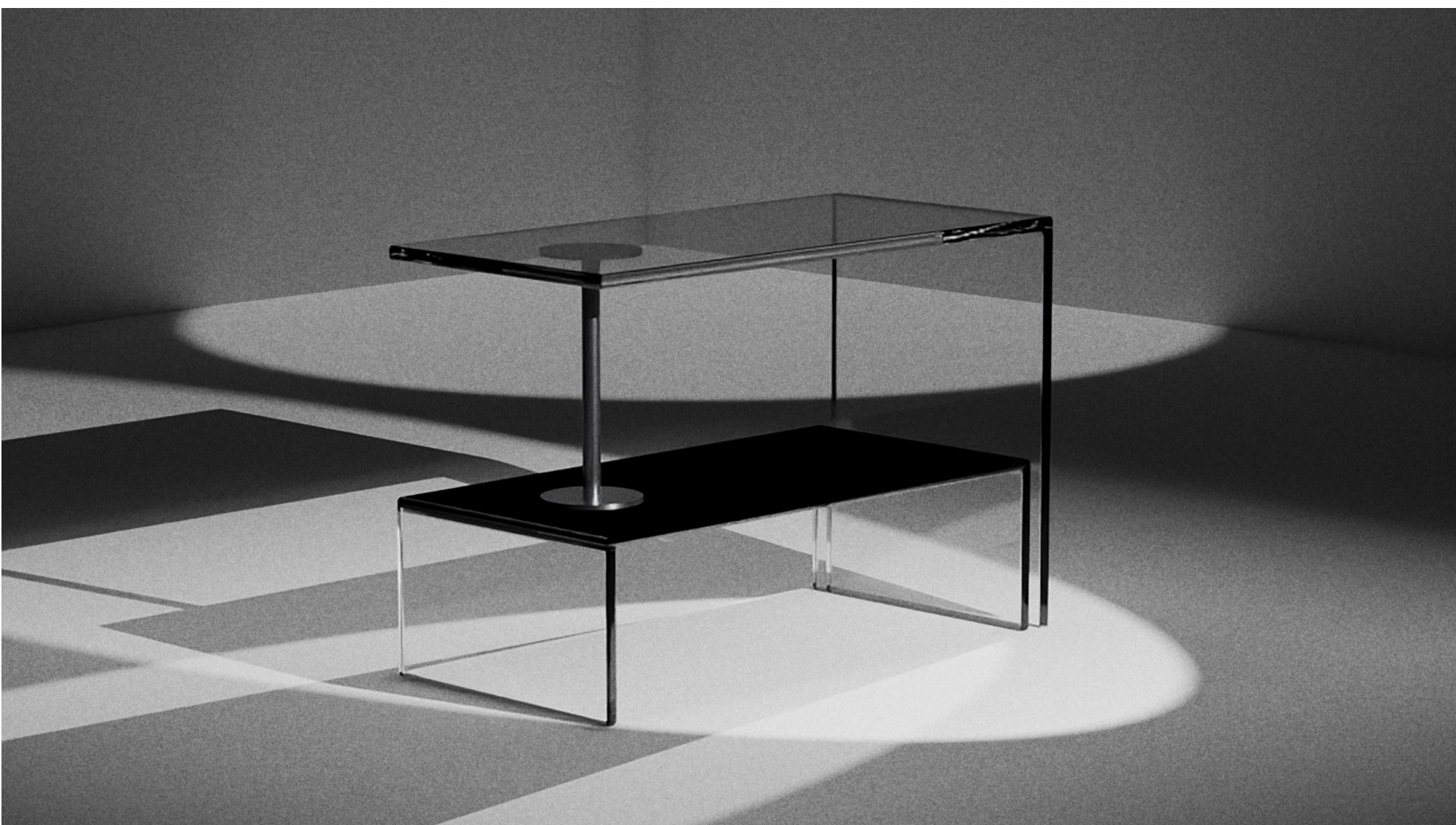
The lamp operates on a rechargeable battery, ensuring sustainability and convenience without the need for constant cables. Its curved silhouette directs light smoothly, enhancing the atmosphere while preventing glare.

Casch is both an object of design and a practical tool, combining everyday usability with artistic character. The glossy, seamless finish highlights its sculptural quality, making it as much a décor element as a functional lamp.



Tavolino da caffè Basello // Re-design
Coffee table Basello // Re-design

26th Jun 2025



This reimagined version of Achille Castiglioni's iconic Basello coffee table pays homage to the original while exploring a new language of transparency and refinement.

The structure has been reinterpreted in glass, giving it a lighter, ethereal presence that interacts poetically with light and shadow. The pivot mechanism, now crafted in stainless steel and nylon, ensures both durability and smooth functionality while highlighting the technical precision of the redesign. By substituting the traditional opaque materials with glass, the table transforms into a dynamic object that shifts visually depending on the environment. The layered surfaces create depth and reflections, offering an ever-changing aesthetic as one moves around it.

Despite the delicate appearance, the robust pivot guarantees stability and usability, staying true to the practical ingenuity of Castiglioni's vision. The interplay between transparency and solid mechanics enhances the sculptural value of the piece. Minimal yet bold, the new Basello resonates with contemporary interiors, bridging heritage and innovation.

This redesign is not only a functional coffee table but also a statement of how timeless design can evolve through material experimentation.



Lampada da tavolo - Sintetica
Table lamp - Sintetica

4th Jul 2025



This portable lamp embodies a dialogue between Italian Futurism and theatrical presence.

Its head and base, 3D-printed in a warm hue, recall the dynamic geometries of Boccioni and Balla. The aluminum stem, slender yet firm, elevates the form with a metallic precision. Rechargeable and LED-powered, the lamp brings mobility and sustainability into its design. Compact in scale, it becomes both an object of use and a symbol of modern progress.

The tilted geometry suggests speed, tension, and a frozen gesture in space. When lit, it acts like a stage spotlight, isolating and dramatizing its surroundings, the play of light and shadow transforms it into an actor of atmosphere. It is both sculpture and function, presence and utility, memory and innovation.

Ultimately, the lamp is a poetic synthesis: a luminous fragment of futurist theater made contemporary.

Poltrona - Linea 69
Lounge chair - Linea 69

12th may 2025

This lounge chair exudes a bold, futurist essence, where minimalism meets sculptural strength.

The bent stainless steel base provides not only durability but also a sense of weightless suspension, as if the seat floats above its foundation. The interplay of sharp geometry and fluid curvature echoes the radical design language of late 1960s Italian modernism, while reinterpreting it for contemporary sensibilities. The wide, angular seat and backrest invite the sitter to recline with authority, almost as though occupying a throne of industrial elegance.

Its stark materiality gives it a timeless resilience, contrasting the soft human body against the cold precision of metal. The clean silhouette ensures versatility, suitable for both gallery-like interiors and bold corporate environments. The deliberate asymmetry in the seating elements adds dynamism, suggesting motion even in stillness. By stripping away ornamentation, the design emphasizes purity of form and structural honesty. It is a chair that challenges convention, existing as both functional furniture and statement art.

Ultimately, it embodies a tension between comfort and confrontation, making it as much an experience as an object.